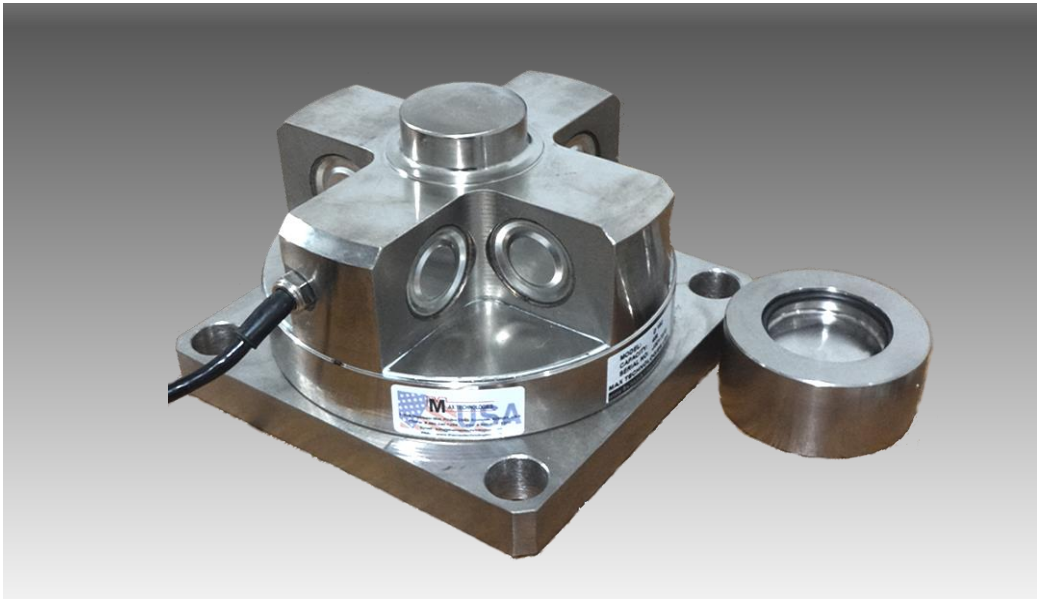


# D190

## Disk Type Load Cell



### FEATURES

- Nominal Load 10t - 45t
- Ideal For Hostile Environment
- Easy To Install
- Alloy Steel
- Moisture Proof Seal

### Applications:

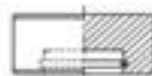
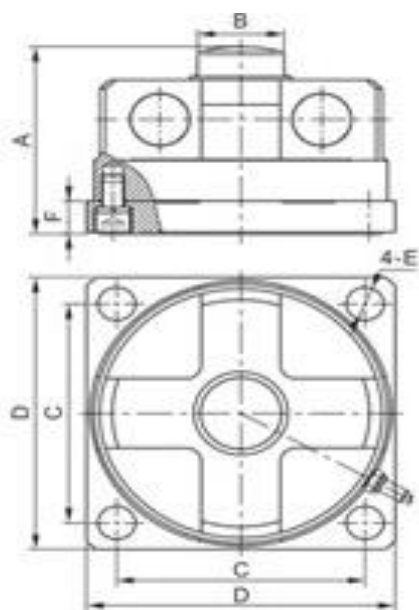
Weighbridge, Hopper Scales, Railroad

### TECHNICAL DATA

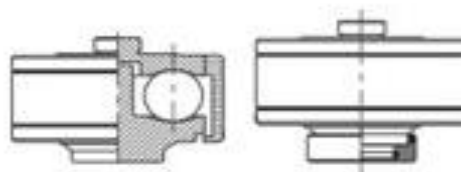
Accuracy Class	C3
Capacity	10t - 45t
Protection Class	IP68
Rated Output	3.00±0.005 (mV/V)
Nonlinearity	±0.02%FS
Hysteresis	±0.2%FS
Repeatability	±0.01%FS
Zero Balance	±1.00%FS
Temperature Effect On Output	±0.02%FS/10
Temperature Effect On Output	±0.02%FS/10
Input Resistance (Ω )	765±15
Output Resistance (Ω )	700±5
Insulation Resistance	≥5000M
Excitation Voltage	10V(DC/AC)
Compensated Temperature Range	-10C - 50C
Operating Temperature Range	-20C-60C
Safe Overload	120%FS

The technical data given here serve only as a product description and must not be interpreted as guaranteed characteristics in the legal sense.

## OUTLINE DIMENSIONS (in millimeters):



stationary type load head



dynamic type load head

## WIRING

Function	Colors
+ Excitation	Red
- Excitation	Black
+ Output	Green
- Output	White

Correct Mounting of Load Cells Is Essential To Ensure Optimum Performance.

3193 N, Drinkwater Blvd, P.O.Box 32662, Scottsdale, AZ 85251, U.S.A

Phone: # 480-240-1299

Fax: # 480-240-1300

Email: [Info@themaxtechnologies.com](mailto:Info@themaxtechnologies.com)

Max Technologies reserves the right make changes to the technology, features, specification and design of the equipment without notice.