

Model A440

Shear beam Load Cell



FEATURES

- **Rated Capacities (ton):**
- 0.5t to 10t
- **Rated Capacities (Klb)**
- 1Klb to 20Klb
- IP67
- Alloy Steel Construction

APPLICATIONS

- Platform Scales
- Belt Scales
- Hoper Scales

TECHNICAL DATA

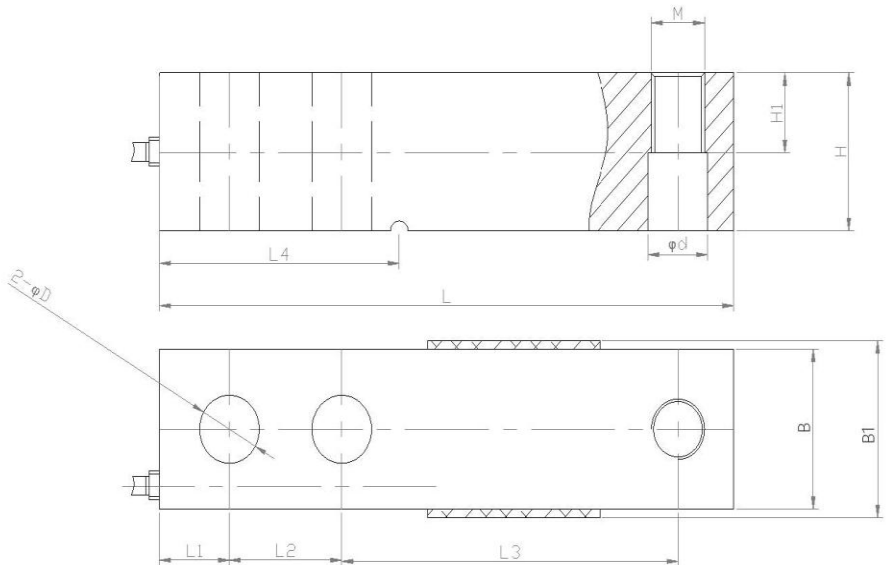
Rated Capacities (Klb):	1, 1.5, 2, 2.5, 3, 4, 5, 7.5, 10, 20, Klb
Rated Capacities (ton):	0.5, 1, 1.5, 2, 2.5, 3, 5, 10, ton
Accuracy Class	C3
Output Sensitivity (= FS)	3.0 ± 0.003 mV/V
Max. number of load cell intervals	3000 nLC
Ratio Of Min. LC Verification Interval	10000 $Y = E_{max} / v_{min}$
Combined Error	≤ ± 0.023 %FS
Minimum Dead Load	0% Of Emax
Safe Overload	150% of Emax
Ultimate Overload	300% of Emax
Zero Balance	< ± 1.0 % of FS
Excitation, Recommended Voltage	5 ~ 12 V
Excitation Maximum	18 V
Input Resistance	350 ± 3.5 Ω
Output Resistance	350 ± 3.5 Ω
Insulation Resistance	≥ 5000 (at 50VDC) MΩ
Operating Temperature	-35 ~ +65 °C
Storage Temperature	-40 ~ +80 °C
Element Material	Nickel plated alloy steel
Ingress Protection (Acc. To EN 60529)	IP67

The technical data given here serve only as a product description and must not be interpreted as guaranteed characteristics in the Legal sense.

Model A440

OUTLINE DIMENSIONS (in millimeters):

Dimension Capacity	100kg -250kg	0.5t-2t	2.5t-5t	10t
L	130	130	171.5	222.3
L1	15.8	15.8	19.1	25.4
L2	25.4	25.4	38.1	50.8
L3	76.2	76.2	95.3	120.7
L4	54.2	54.2	77.2	101.6
B	31.8	31.8	38.1	50.8
B1	37	34	40	52.4
H	31.8	31.8	38.1	50.8
H1	15.8	15.8	18.8	25.4
H2	14.5	14.5	17.5	-
H3	15.8	15.8	18.8	-
H4	4.8	4.8	4.8	-
∅D	13.5	13.5	19.8	26
∅D1	18	18	25	-
∅d1	4	4	4	-
∅d2	2	2	2	-
M	12 x 1.75	12 x 1.75	18 x 1.5	24 x 2

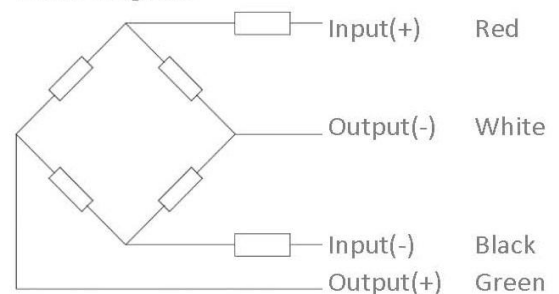


WIRING

Function	Colors
+ Excitation	Red
- Excitation	Black
+ Output	Green
- Output	White

Cable diameter: ∅5mm
 Standard cable length for 100kg – 2t: 4m and 6m for the higher capacities
 Shield not connected to element

4-wire diagram



Correct Mounting of Load Cells Is Essential To Ensure Optimum Performance.

3193 N, Drinkwater Blvd, P.O.Box 32662, Scottsdale, AZ 85251, U.S.A

Phone: # 480-240-1299

Fax: # 480-240-1300

Email: Info@themaxtechnologies.com

Max Technologies reserves the right make changes to the technology, features, specification and design of the equipment without notice.