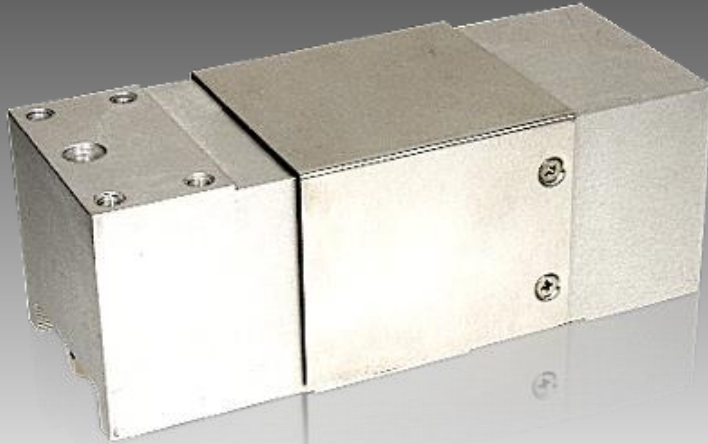


# Model D 293

## Single Point Stainless Steel Load Cell



### FEATURES

- **Rated Capacities (kg):**
- 50 kg to 1000 kg
- **Rated Capacities (lb)**
- 110 lb to 2200 lb
- IP67
- Stainless Steel Construction
- Single Point 800x800 mm platform

### APPLICATIONS

- Large Platform Scales
- Hanging Scales
- Check Weighing

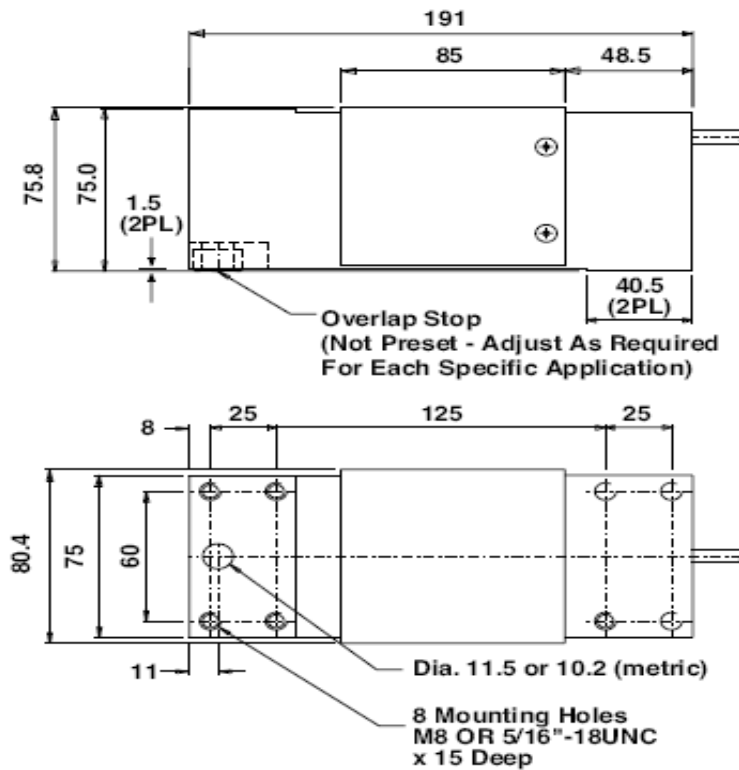
### TECHNICAL DATA

<b>Rated Capacities (lb):</b>	110, 165, 220, 330, 440, 550, 660, 1100, 1400, 1650, 2200, lb
<b>Rated Capacities (kg):</b>	50, 75, 100, 150, 200, 250, 300, 500, 635, 750, 1000, kg
Rated output	2± 0.10 MV/V
Non-linearity	±0.02% FS
Hysteresis	±0.02% FS
Repeatability	±0.01% FS
Creep (30minutes)	±0.02% FS
Zero Balance	±1.00% FS
Temperature effect on zero	±0.02% FS/10 °C
Temperature effect on output	±0.02% FS/10 °C
Input Resistance Ω	410±15Ω
Output Resistance Ω	350±3Ω
Insulation Resistance	≥5000 MΩ
Excitation Voltage	10 V(DC/AC)
Compensated Temperature Range	-10~+50°C
Operating Temperature Range	-20~+60°C
Safe Overload	120% FS
Maximum Applicable Platform Size	800x800 mm
Cable	φ 5.4x3 M

The technical data given here serve only as a product description and must not be interpreted as guaranteed characteristics in the legal sense.

# Model D 293

## OUTLINE DIMENSIONS (in millimeters):



## WIRING

Function	Colors
+ Excitation	Red
- Excitation	Black
+ Output	Green
- Output	White

Correct Mounting of Load Cells Is Essential To Ensure Optimum Performance.

3193 N, Drinkwater Blvd, P.O.Box 32662, Scottsdale, AZ 85251, U.S.A

Phone: # 480-240-1299

Fax: # 480-240-1300

Email: [Info@themaxtechnologies.com](mailto:Info@themaxtechnologies.com)

Max Technologies reserves the right make changes to the technology, features, specification and design of the equipment without notice.