

Model A170

Disk Type Load Cell



FEATURES

- **Rated Capacities (lb):**
1100, 2200, 4410, 7716, 11023, 22046, 28660, 61729, 132277
- **Rated Capacities (kg):**
500, 1000, 2000, 3500, 5000, 10,000, 13,000, 28,000, 60,000
- Integrated Static Overload Protection
- Hermetically Sealed
- Stainless Steel IP 68 Low Profile Load Cell

APPLICATIONS

- Suitable for hopper, platform, Pallet Scales

TECHNICAL DATA

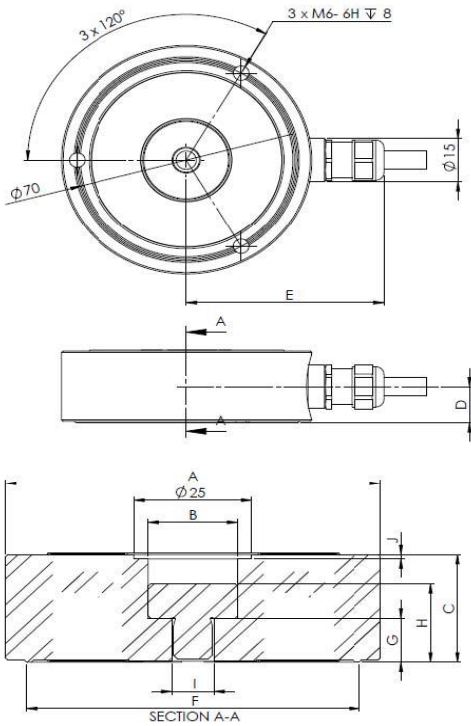
Rated Capacities (lbs.):	1100, 2200, 4410, 7716, 11023, 22046, 28660, 61729, 132277
Rated Capacities (kg):	500, 1000, 2000, 3500, 5000, 10000, 13000, 28000, 60000
Output sensitivity (FS)	2.00±0.01 mV/V
Accuracy class	C3
Combined Error	C3= ≤± 0.0230/ C4= ≤± 0.0174 / C5= ≤± 0.0140
Ingress Protection	IP68
Max. number of load cell intervals	C3= 3000 nLC
Zero Balance	<± 1.0 % FS
Input Resistance Ω	1100 ± 100 , 1200 ± 100 , 1075 ± 100 , 1350± 200
Output Resistance Ω	1025 ± 25 , 1000 ± 0.5, 930± 0.5, 1175± 0.5
Insulation Resistance	≥5000MΩ (at 50VDC)
Excitation Voltage	10-15V
Excitation maximum	30V
Compensated Temperature Range	-10 ~ +40 °C
Operating Temperature Range	-35 ~ +70 °C
Storage temperature	-50 ~ +90 °C
Safe Overload	150% Emax
Ultimate overload	300% Emax
Element material	Stainless steel

The technical data given here serve only as a product description and must not be interpreted as guaranteed characteristics in the Legal sense.

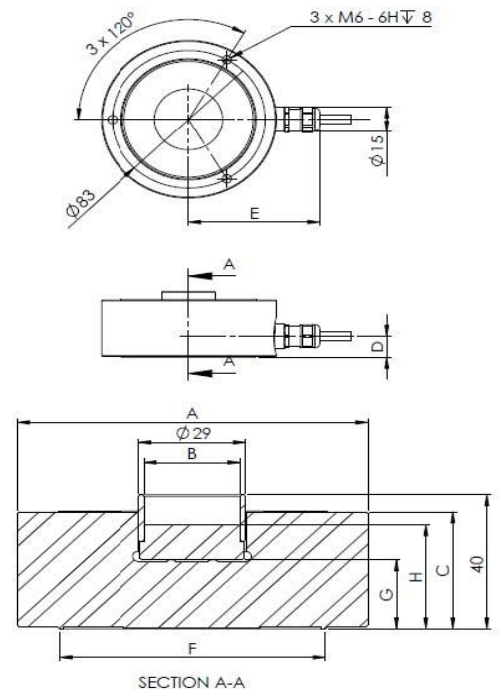
Model A170

OUTLINE DIMENSIONS:

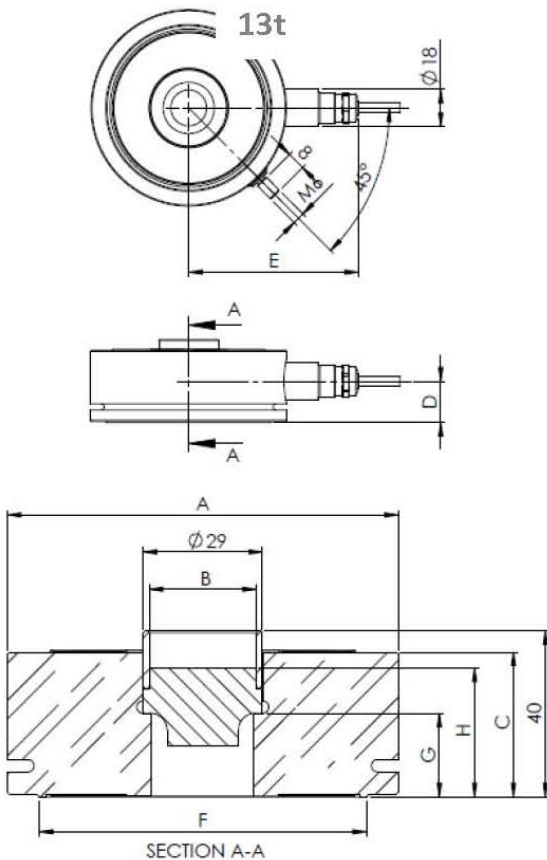
0.25, 0.5, 1, 2, 3.5, 5t



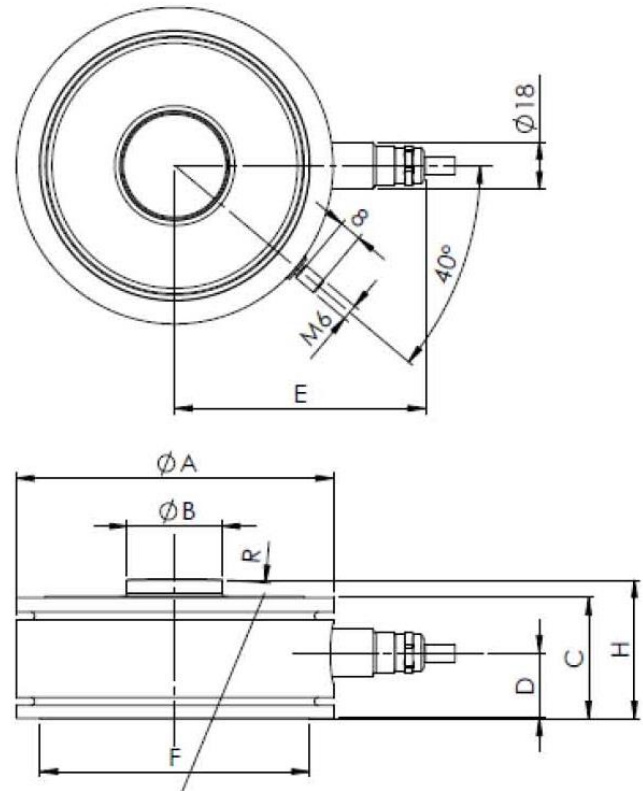
10t



13t



28, 60t



Model A170

Available accessories

<p>Rocker pin</p> <ul style="list-style-type: none"> • Automatic centering of load • Anti-corrosion • Easy installation • Stainless Steel 	
<p>tank mount</p> <ul style="list-style-type: none"> • Stainless steel mount • Easy load cell access • Easy installation • Lift-off protection • Controlled horizontal movement 	

Features:

- Shielded, 4 conductor cable
- Cable diameter: $\varnothing 6\text{mm}$
- Standard cable length for 500kg – 1t: 3m, for 2t – 5t: 6m and for 10t:13t,28t,60t, 15m

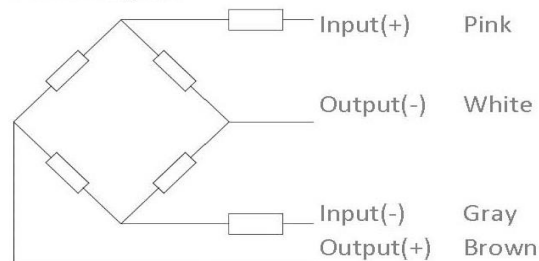
DIMENSIONS:

Capacity	ΦA	ΦB	C	D	E	ΦF	G	H	I	J
0.5t ,1t	80	19	25.0	12.5	65	71	10	18	M10	1
2t, 3.5t, 5t	80	19	30.0	12.5	65	71	10	18	$\varnothing 15$	6
10t	95	26	35.0	12.5	72	75	20.7	31.2	--	--
13t	95	26	35.0	20	85	79.5	20	31	--	--
28t	120	35.9	46.0	25	94	102	-	53	--	--
60t	140	47.9	62.0	34	104	124	-	69	--	--

WIRING

Function	Colors
+ Excitation (input +)	Pink
- Excitation (input -)	Gray
+ Signal (output +)	Brown
- Signal (output -)	White

4-wire diagram



Correct Mounting of Load Cells Is Essential To Ensure Optimum Performance.

3193 N, Drinkwater Blvd, P.O.Box 32662, Scottsdale, AZ 85251, U.S.A

Phone: # 480-240-1299
 Fax: # 480-240-1300
 Email: Info@themaxtechnologies.com

Max Technologies reserves the right make changes to the technology, features, specification and design of the equipment without notice.