

D160X

Digital load Cell



- FEATURES
- Material Allay Steel
  - Protection IP67
  - Tension and compression applications

- Wiring
- Cable 5.4X9M Or
  - length: 16m.
  - Cable jacket: Polyurethane
  - Shield not connected to element

- Applications
- Suitable for Industrial Floor Scales, Dormant Scales for Wash- down.
  - Large Platform Scales
  - Truck Weighbridge

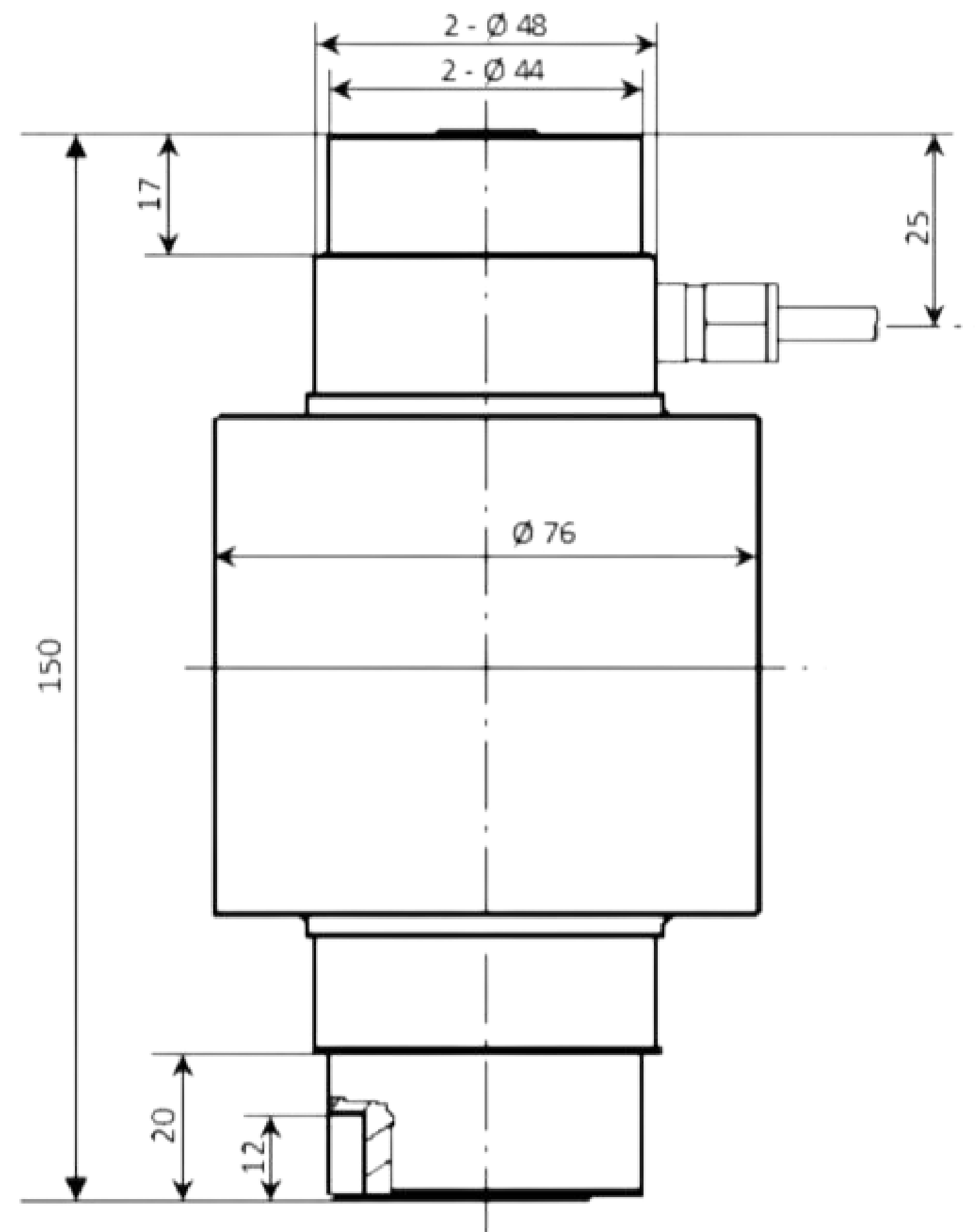
PRODUCT SPECIFICATIONS

Model	D160X
Rated Capacities (t):	10t,20t,30t,40t
Rated Capacities (lb):	20.000,40.000,60.000,80.000
Output	2 mv/v
Zero Balance	< ±1.00% of Full Sc
Creep(30 mins)	< ±0.02% of FullSc
NonLinearity	< ±0.03% of Full Sc
Hysteresis	< ±0.03% of Full Sc
Repeatability	< ±0.01% of Full Sc
Temperature Effect on Output	< 20PPM/°C of A
Temperature Effect on Zero	< 20PPM/°C of A
Temperature Range: Operating	20°C to +60
Temperature Range: Compensated	10°C to +50
Input Impedance	± Omhs 760 ±10
Output Impedance	≥ Omhs 700 ±5
Insulation Impedance	10V DC/AC
Excitation:Recommended	20V DC/AC

The technical data given here serve only as a product description and must not be interpreted as guaranteed characteristics in the Legal sense.

# D160X

## Digital load Cell



Function	Colors
+ Excitation	Red
- Excitation	Black
+ Output	Green
- Output	White

**Correct Mounting of Load Cells Is Essential To Ensure Optimum Performance.**

3193 N, Drinkwater Blvd, P.O.Box 32662, Scottsdale, AZ 85251, U.S.A

Phone: # 480-240-1299

Fax: # 480-240-1300

Email: [Info@themaxtechnologies.com](mailto:Info@themaxtechnologies.com)

Max Technologies reserves the right make changes to the technology, features, specification and design of the equipment without notice.