

## Single Ended Beam Load Cell



### FEATURES

- **Rated Capacities (lb):**  
1000, 2000, 3000, 4000, 5000, 10000
- **Rated Capacities (kg):**  
500, 1000, 1500, 2000, 2500, 5000
- Welded Seal Construction IP68
- Single Ended Beam Type
- Stainless Steel
- High accuracy

### APPLICATIONS

- Suitable for Industrial Platform Scales, Tank Bin and Hopper Weighing.

### TECHNICAL DATA

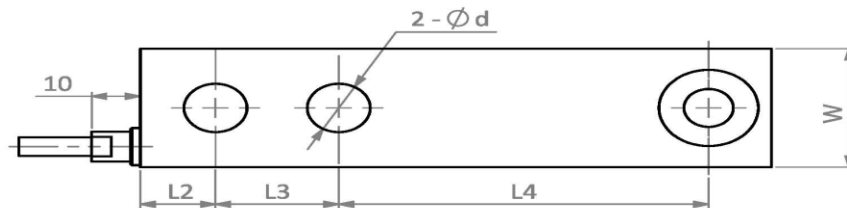
<b>Rated Capacities (lb):</b>	1000, 2000, 3000, 4000, 5000, 10,000
<b>Rated Capacities (kg):</b>	500, 1000, 1500, 2000, 2500, 5000
Rated Output	2.0 ± 0.02 mV/V
Combined Error	± 0.02 % FS
Non-linearity	± 0.02 % FS
Creep Error (30 minutes)	± 0.016 % FS
Temperature Effect on Zero (ZTC)	%FS/10°C ± 0.02 % FS
Temperature Effect on Sensitivity (STC)	%FS/10°C ± 0.015 % FS
Zero Balance	± 1.00 % FS
Safe Overload	150% %FS
Ultimate Overload	300 %FS
Maximum Deflection	mm 0.5t – 2t: 0.1108 ~ 0.24/ 5t: 0.63
Excitation, Recommended Voltage	V 5 ~ 12
Excitation, Maximum Voltage	V 18
Input Resistance	Ω 1000 ± 10
Output Resistance	Ω - 1000 ± 10
Insulation Resistance (50V)	MΩ ≥5000
Compensated Temperature	°C -10 ~ + 40
Operating Temperature	°C 35 ~ + 65
Storage Temperature	°C 40 ~ + 80
Recommended Torque on Fixation Bolts	Nm M12: 100/ M20: 450
Ingress Protection	IP68

The technical data given here serve only as a product description and must not be interpreted as guaranteed characteristics in the legal sense.

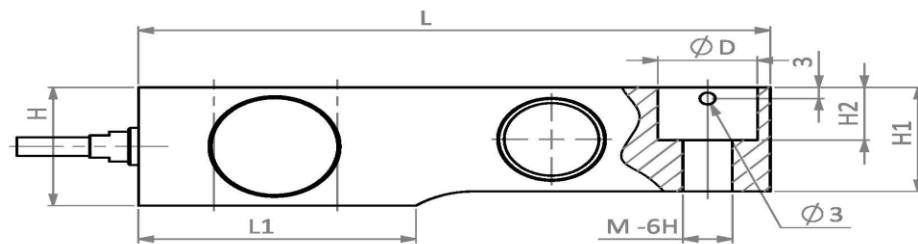
# Model A 438

## OUTLINE DIMENSIONS:

Top View



Front View



## DIMENSIONS

Capacity	L	L1	L2	L3	L4	H	H1	H2	W	D	d	M
<b>lb/inches</b>												
1000	287	126	34	56	168	70	57	31	70	45	29	M 27
2000	287	126	34	56	168	70	62	31	70	45	29	M 27
3000-4000	287	126	34	56	168	80	68	31	70	45	29	M27
10000	380	168	42	84	210	97	88	44	84	67	45	M 44
<b>kg/mm</b>												
500	130.0	57.1	15.5	25.4	76.2	31.8	26.0	14.2	31.8	20.5	13	M 12
1000	130.0	57.1	15.5	25.4	76.2	31.8	27.95	14.2	31.8	20.5	13	M 12
1500-2000	130	57.1	15.5	25.4	76.2	35.9	31.95	14.2	31.8	20.2	13	M 12
5000	172	76.2	19.1	38.1	95.3	44	40	20	38	30.2	20.5	M 20

## WIRING

Function	Colors
+ Input	Green
- Output	Red
+ Output	White
- Input	Black

Correct Mounting of Load Cells Is Essential To Ensure Optimum Performance.

3193 N, Drinkwater Blvd, P.O.Box 32662, Scottsdale, AZ 85251, U.S.A

Phone: # 480-240-1299

Fax: # 480-240-1300

Email: [Info@themaxtechnologies.com](mailto:Info@themaxtechnologies.com)

Max Technologies reserves the right make changes to the technology, features, specification and design of the equipment without notice.