

Model MT 7224

Double Ended Shear Beam



FEATURES

- **Rated Capacities (lb):**
20,000, 60,000
- **Rated Capacities (kg):**
10,000, 30,000
- Integrated Static Overload Protection
- Hermetically Sealed
- Alloy Steel IP 67,68 Low Profile Load Cell

APPLICATIONS

- Weighing hopper scale system
- Truck Weighbridge

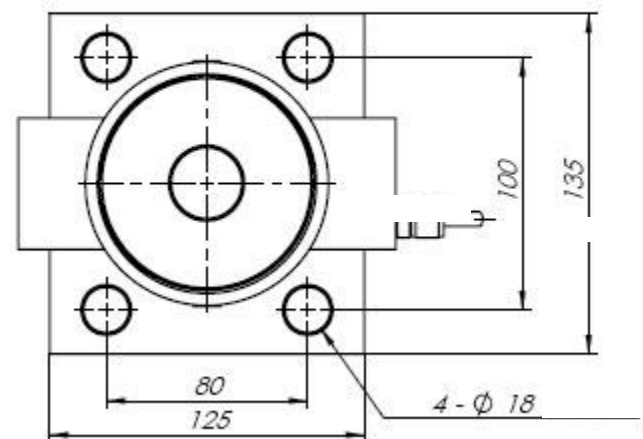
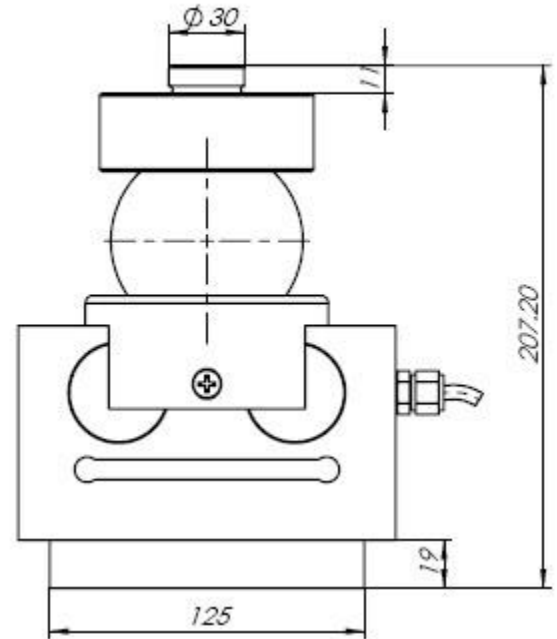
Rated Capacities (lbs.):	20,000,40,000,60,000
Rated Capacities (kg):	10,000,20,000,30,000
Output sensitivity (FS)	2.00±0.02 mV/V
Total Error	± 0.2%F. S
Creep (30 minutes)	± 0.2%F. S
Recommended Excitation Voltage	5-18V (AC-DC)
Maximum Excitation Voltage	24V (AC-DC)
Zero Balance	<± 1.0 % FS
Input Resistance Ω	775±10Ω
Output Resistance Ω	700±5Ω
Insulation Resistance	≥5000MΩ
Safe Overload	150% F. S
Ultimate overload	200% F. S
Operating Temperature Range	-35 ~ +70 °C
Compensated temperature	-20 ~ +60 °C
Temperature Effect On Load	±0.02%F.S/10°C
Temperature Effect On Zero	±0.02%F.S/10°C
Construction	Alloy Steel
Protection Class	IP67&IP68
Citation	GB/T7551-2008/OIML R60

The technical data given here serve only as a product description and must not be interpreted as guaranteed characteristics in the Legal sense.

Model MT 7224



OUTLINE DIMENSIONS:



WIRING

Function	Colors
+ Input	Red
- Output	White
+ output	Green
- Input	Black

Correct Mounting of Load Cells Is Essential To Ensure Optimum Performance.

3193 N, Drinkwater Blvd, P.O.Box 32662, Scottsdale, AZ 85251, U.S.A

Phone: # 480-240-1299

Fax: # 480-240-1300

Email: Info@themaxtechnologies.com

Max Technologies reserves the right make changes to the technology, features, specification and design of the equipment without notice.