

D160

Analogue Load Cell



FEATURES

- Material Alloy Steel
- Protection IP67
- Tension and compression applications

Wiring

- Cable 5.4X9M Or
- length: 16m.
- Cable jacket: Polyurethane
- Shield not connected to element

Applications

- Suitable for Industrial Floor Scales, Dormant Scales for Wash- down.
- Large Platform Scales
- Truck Weighbridge

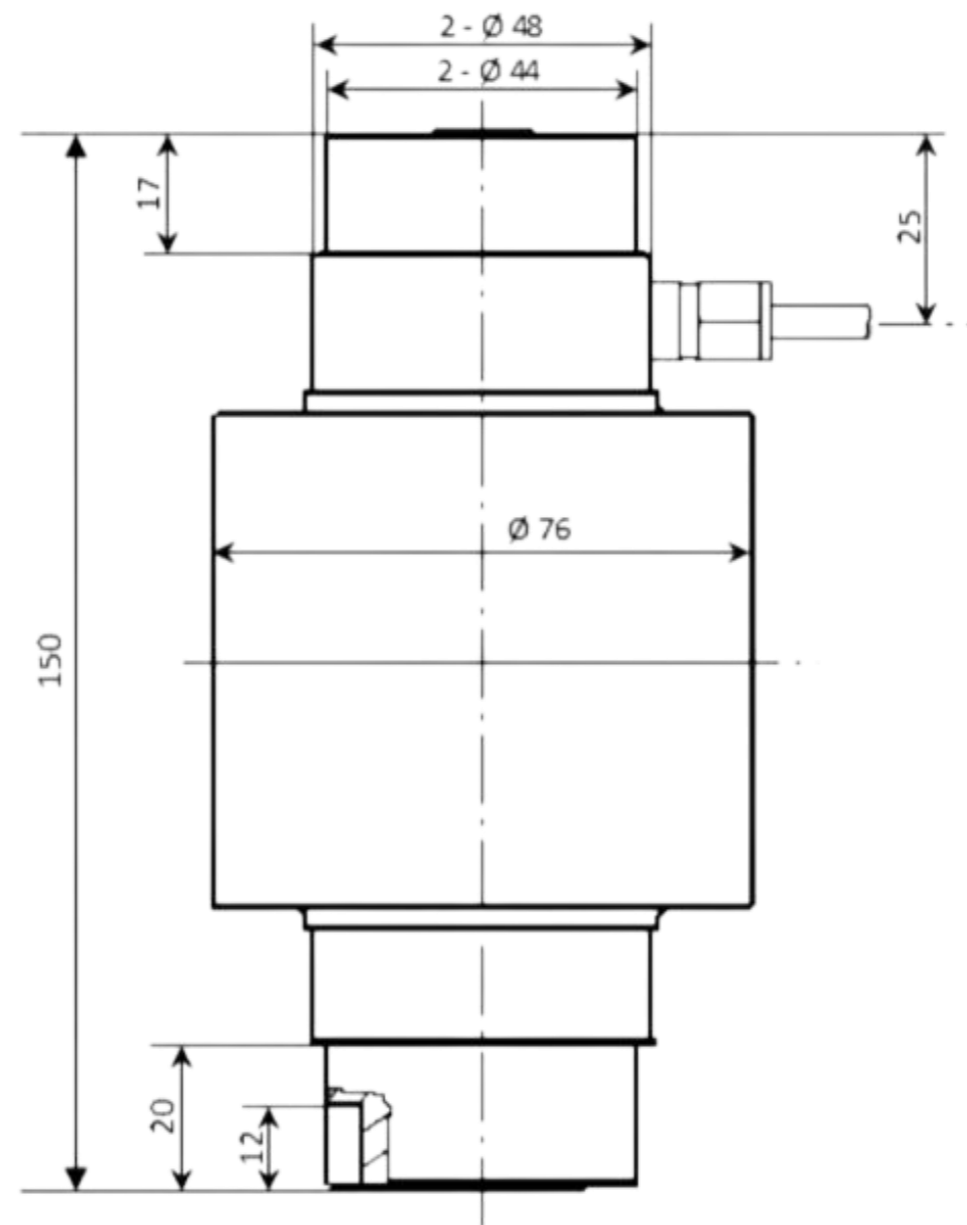
PRODUCT SPECIFICATIONS

Model	D160
Rated Capacities (t):	10t,20t,30t,40t
Rated Capacities (lb):	20.000,40.000,60.000,80.000
Output	2 mv/v
Zero Balance	< ±1.00% of Full Sc
Creep(30 mins)	< ±0.02% of FullSc
NonLinearity	< ±0.03% of Full Sc
Hysteresis	< ±0.03% of Full Sc
Repeatability	< ±0.01% of Full Sc
Temperature Effect on Output	< 20PPM/°C of A
Temperature Effect on Zero	< 20PPM/°C of A
Temperature Range: Operating	20°C to +60
Temperature Range: Compensated	10°C to +50
Input Impedance	± Omhs 760 ±10
Output Impedance	≥ Omhs 700 ±5
Insulation Impedance	10V DC/AC
Excitation:Recommended	20V DC/AC

The technical data given here serve only as a product description and must not be interpreted as guaranteed characteristics in the Legal sense.

D160

Analogue Load Cell



Function	Colors
+ Excitation	Red
- Excitation	Black
+ Output	Green
- Output	White

Correct Mounting of Load Cells Is Essential To Ensure Optimum Performance.

3193 N, Drinkwater Blvd, P.O.Box 32662, Scottsdale, AZ 85251, U.S.A

Phone: # 480-240-1299
Fax: # 480-240-1300
Email: Info@themaxtechnologies.com

Max Technologies reserves the right to make changes to the technology, features, specification and design of the equipment without notice.